



**NComputing®**

©NComputing Co., Ltd. All rights reserved.  
NComputing is registered trademarks of NComputing Corporation.  
Microsoft and Windows are registered trademarks of Microsoft Corporation.  
Intel and Pentium are registered trademarks of Intel Corporation.  
Information in this quick installation guide is subject to change without notice.

[www.ncomputing.co.kr](http://www.ncomputing.co.kr)  
[www.ncomputing.com](http://www.ncomputing.com)

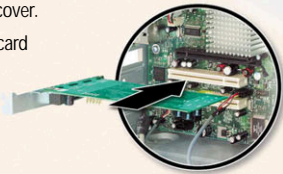
# Xtenda

## Quick Installation Guide

To ensure your using the Hardware and the Software of Xtenda have to be installed in your Host PC. For installation Xtenda on your system, see the following procedure in this guide.

### 1. Install the Xtenda PCI card on the Host PC

- step 1** Turn off the computer and then remove the computer cover.
- step 2** Insert the Xtenda PCI card and tighten the screw.
- step 3** Replace the computer cover.

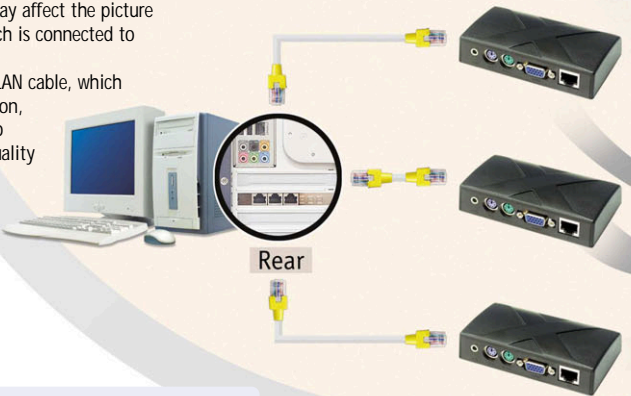


### 2. Connect the PCI card to Multi Box using a LAN cable

The use of a 16ft.(5m) or longer common \*LAN cable for the connection may affect the picture quality of the monitor which is connected to the Multi Box.

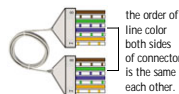
To use of Category 6 type LAN cable, which has a high class specification, is recommended in order to achieve the best picture quality of each Multi Box.

\*LAN cable in this guide means CAT5e cable or CAT6 cable and more.



- ▶ Please use the Direct LAN cable\*.
- ▶ Please do not connect to any network devices.

\* The Direct LAN cable is that the order of line color both sides of connector is the same each other.



## Installing Hardware

### Package Check

- 1
- 2
- 3 Installing Software

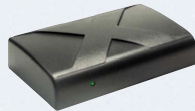
The CD for the Installation of the Program



User's Guide(Optional) or Quick Installation Guide(Optional)



Xtenda Multi Box



Xtenda PCI Card



A Bracket for PCI Card Low Profile Bracket (Optional)



### 4. Xtenda driver installation

- step 1** Installation of Xtenda Bus Enumerator
- step 2** Installation of Graphic Controller for Port 1 of PCI card
- step 3** Installation of Graphic Controller for Port 2 of PCI card.
- step 4** Installation of Graphic Controller for Port 3 of PCI card.

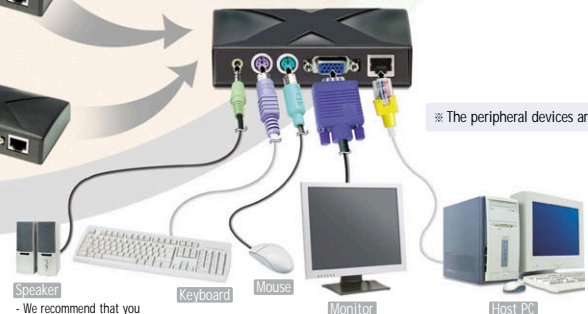
### 5. Xtenda application program installation

Type the serial number and the activation key for every Xtenda Multi Box.

### 6. Registration of the Xtenda via the Internet

We recommend to register now to get the latest costfree update.

### 3. Connect the peripheral devices to Multi Box.



※ The peripheral devices are optional.

Speaker  
- We recommend that you use a speaker with a booster inside.

Keyboard

Mouse

Monitor

Host PC

After finishing installing the Xtenda hardware, see the back of this guide in order to install the Xtenda software.

Back Page

# Xtenda Remote Management Console Installation

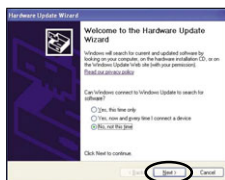
Please make sure that the host computer and the Multi Box are connected correctly before installing the drivers.



The peripheral device must be connected to the PCI card and the Multi Box in order to use the Xtenda product before installing the driver and application program. And both hardware and software must be installed to achieve the normal operation of the Xtenda product.

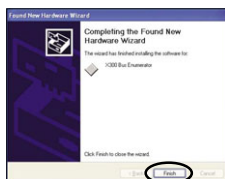
## Installation of a Xtenda PCI card driver

- 1 When the computer start, "Hardware Update Wizard" window is appeared.



- 2 Insert the "Software Installation CD" into the CD-ROM drive and then install the PCI card driver.

- 3 Completing the Xtenda Bus Enumerator.



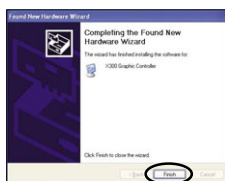
## Installation of a Xtenda Graphic Controller

- 1 After installing Xtenda Bus Enumerator, Prompted with the "Found New Hardware Wizard" screen.



- 2 Install Xtenda Graphic Controller.

- 3 The screen is prompted after turn off and on the monitor of Host PC automatically for a short time. Click the <Finish>button to complete the graphic controller driver.



Each port of PCI card have to be installed separately. Therefore you have to installed the Xtenda Graphic Controller in order to use all ports of PCI card.

## Installation of Xtenda Remote Management console

- 1 After installing the PCI card drivers please execute the Install.exe file which is located in the CD-ROM drive.

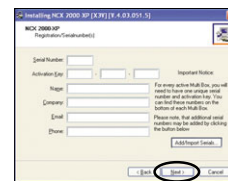


- 2 Please click on the "Install Program" button.

- 3 Please input the password, which is designed to prevent the unauthorized access to the NCX-2000-XP remote management console program.



- 4 For the registration of the Xtenda products please input the serial number, the activation key written on the back of the Multi Box and other information.



- 5 A message window, which asks the user for their intention to restart the system, appears when the correct installation of the application program is completed. After select the "Yes, I want to restart my computer now." Please click on the <Restart> button.



## The Operating Environment of the Computer.

Operating Systems supported by the Xtenda PCI card are as follows

Windows® 2000 Professional / Windows® XP Home Edition / Windows® XP Professional / Windows® XP Media Center Edition (Changes may be made to the list of supported Operating Systems without prior notice.)

### Screen Resolutions Supported

Resolution 1024 x 768 / 16 bit colors / Refresh rate 60 Hz

Resolution 800 x 600 / 16 bit colors / Refresh rate 75Hz

### Recommended Specification for Using the Xtenda PCI card and the Multi Box

1 Xtenda PCI card	2 Xtenda PCI cards
- CPU : Intel Pentium4 1.3 ~ 2.4GHz with HT*	- CPU : Intel Pentium4 2.4 ~ 3.8GHz with HT*
- Main Memory : 512Mbytes or more	- Main Memory : 1.0Gbytes or more



\*HT : Intel® Hyper-Threading Technology



The contents may vary depending on the specification of the products and may change without advance notice.